

# Enclosure Cooling Units Installation Top mounted



## TEMPLATE

Paste the mounting template that was sent in the package to the surface where the air conditioner will be installed.

## CUTTING

Cut the window that shown in the template with a hand tool like jigsaw. and drill holes that shown on template.

## FIXING

Place the Air Conditioner on the surface that has holes and Fix the air conditioner to the panel surface from the drilled holes by the M8 screws and tighten the screws.

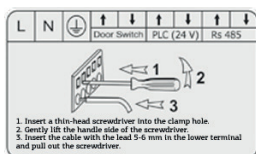
## ENERGY

Energize the cable shown in the illustration. The device will start working with set to 34 °C.

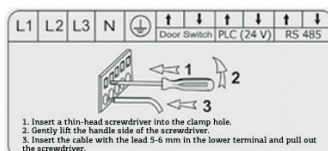
To change the set value and other parameters, refer to the Digital Handling sections on the following pages.

### 220 V. MONOFAZE UNITS

Energize the cable shown in the illustration. The device will start working with set to 34 °C. To change the set value and other parameters, refer to the Digital Handling sections on the following pages.



### 380 V. TRIFAZE UNITS



### 220 V. MONOFAZE UNITS

Energize the cable shown in the illustration. The device will start working with set to 34 °C. To change the set value and other parameters, refer to the Digital Handling sections on the following pages.

## MAINTENANCE

### CONDENSED CARE

1. Be sure to turn off the energy of one-device after, open the front door.
2. Condenser was attached as oil, dirt or dust.  
Clean it with compressed air (dirty condenser, heat transfer is insufficient, the device short cause it to fail time and high energy consumption happens. If the cleaner is cleaning solvent you can use. The liquid will flow down take necessary measures to prevent the device is running on)
3. Clean the dirt on fan blades.  
(Causes to fan balance and to fail in a short time)
4. Check the drain hose. Breaking, obstruction v.s If you have your expenses. (Otherwise the clipboard into the condensation may lead to the possibility of water splash)
5. Check the electrical connection cable.  
(Abrasion, friction, dislocation of the device to fail short circuit may lead to the formation)
6. Check the thermostat settings for the device. In the heat value of the firm suggests that you pay attention to.  
(34 ° C - 38 ° C) (panel below to cool the inside of your needs, unnecessary energy may lead to rapid wear and consumption of the device.
7. After making sure the lid of the device are closed to give the energy. Door open device is not working efficiently and leads to accidents.

IF THERE IS "HTC / ER2 / CH2" MESSAGE,  
CONDENSER MAINTENANCE MUST BE DONE.

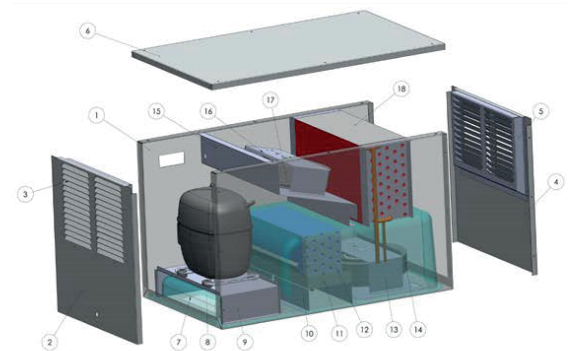
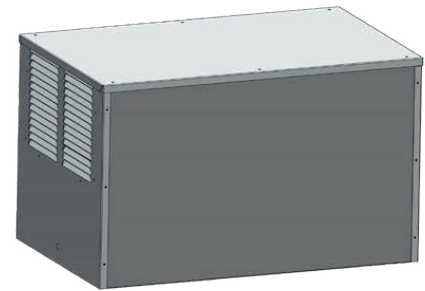
### EVAPORATOR CARE

1. After making sure the device closed the energy, the vertical air conditioning units located above or behind the removed bolts and disconnect the fan iron.
2. The evaporator fan motor is stuck at the bottom of the oil, dirt, dust, etc. cleaned with compressed air
3. The dirt on fan blades clean.  
In a short time to balance the fan and cause it to fail.
4. Evaporator pollution situation, the worse you think you can use a chemical cleaner. (Pour water to evaporator pan and, followed by water to make sure not clogged drain lines
5. Check the electrical connection cable
6. Top / back to replace your metal. By making the final control device to give the energy
7. Check the thermostat settings for the device.  
In the heat value of the firm suggests that you pay attention to. (34 ° C - 38 ° C)
8. After making sure the lid closed, the device, please provide the energy.

IF THERE IS "LTE / ER3 / CH3" MESSAGE,  
EVAPORATOR MAINTENANCE MUST BE DONE.

### DISPLAY

1. TEMP flashes when the compressor is active.
2. If pressed for 5 sec., the MENU-1 appears.
3. Green Led: Error Blue: Ethernet Connected Yellow: Main Board Connected
4. If pressed for 5 sec., Temperature Setting Menu appears.
5. If the R and SET buttons are pressed for 5 seconds, the MENU-2 appears.
6. When pressed while in any menu, it returns to the main operation screen. If it is pressed for 5 sec., it turns ON/OFF.



## FAILURE MESSAGES

**WATER SENSOR ERROR:** Sensor Break / No Contact  
**COMPRESSOR FAILURE :** Cooling Error, Gas Leakage or Compressor Failure

**FREECOOLING SENSOR ERROR:** Sensor Break / No Contact  
**HTC Failure :** High Condenser Surface Temperature ( >72 °C )

**CONDENSER SENSOR ERROR:** Sensor Break / No Contact  
**HTP Failure :** High Temperature (Set + High Temp.Point) °C

**EVAP SENSOR ERROR:** Sensor Break / No Contact  
**LTE Failure :** Low Evaporator Surface Temperature ( <3 °C )

**CABINET SENSOR ERROR:** Sensor Break / No Contact  
**WATER Failure:** It occurs water contact + 1 minute

**DOOR OPEN ERROR:** Door Switch (NO)



## MENU - 1

SET ALARM ALARM ON	Indicates Alarm Active / Disabled Status.
LIMIT TEMP LIMIT ON	Set Lower Lock Changes State. (Lock: 26 °C)
BUZZER TONE TONE ON	Changes The Key Sound. On / Off
SERIAL NO EA15XXXXXX	The temperature unit appears.
TEMP SYMBOL Celcius	Returns to Default Settings
SET DEFAULT PRESS OK KEY	Restarts the System.
RESTART SYS PRESS OK	Exit the Menu and Return to the Main Screen.
EXIT PRESS OK	Important Note: Use the SET key to change the value while in the parameter.

## MENU - 2

-> CHANGE MODE TEMP.MON.	Changes Operating Mode. CabinetCooler / FreeCool / Heater
-> DOOR EVP STATUS -> DOOR SWIT STAT -> HYSTERS -> SHOW EVAP SENS -> SHOW KOND SENS -> SENSOR CONTROL -> HIGH TEMP SET -> HIGH TEMP POINT -> MODBUS BAND -> MODBUS ID -> AUTORESET STATUS -> FC SET VALUE -> SERVICE MODE -> ETHERNET MODE	On Door Switch, Stop Evap Fan (ON) Door Switch Relay, Open/Close NO/NC (OFF) Hysteresis for Set Value (4 °C) Show EVAP Value on Main Screen (OFF) Show Condenser Value on Main Screen (OFF) Sensors 2 and 3 are ON Create High Temperature Alarm (OFF) High Temperature Alarm Point (SET+20 °C) Modbus Communication Rate (9600) Modbus ID Select (1) Automatic Reset on Failure (ON) Setpoint in Freecool and Heater Mode Compressor Activates Manually Ethernet Mode (Online / Offline)
When Ethernet Mode is OFFLINE; Ethernet socket can be used for Modbus TCP communicationn Screen	
-> SET LANGUAGE ENGLISH	Changing the Menu Language Turkish/ English/Deutsch
-> EXIT PRESS OK	Exit the Menu and Return to the Main Screen